

# MONTHLY MEMBERSHIP PROGRESS REPORT

LOCATION REPUBLIC OF NORTH MACEDONIA

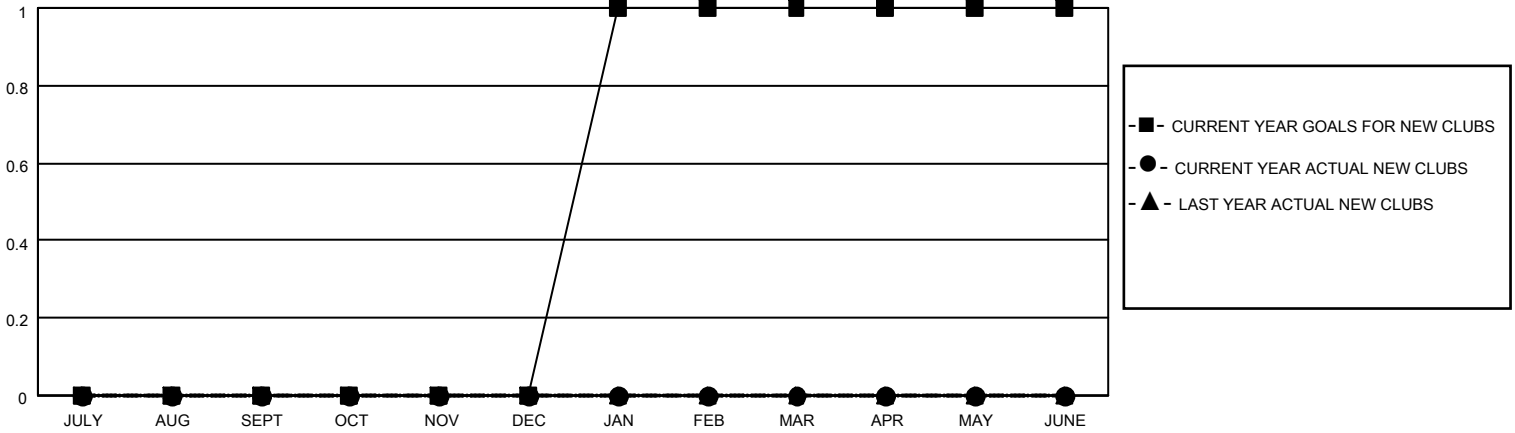
District 132

Results as of: 5/31/2023

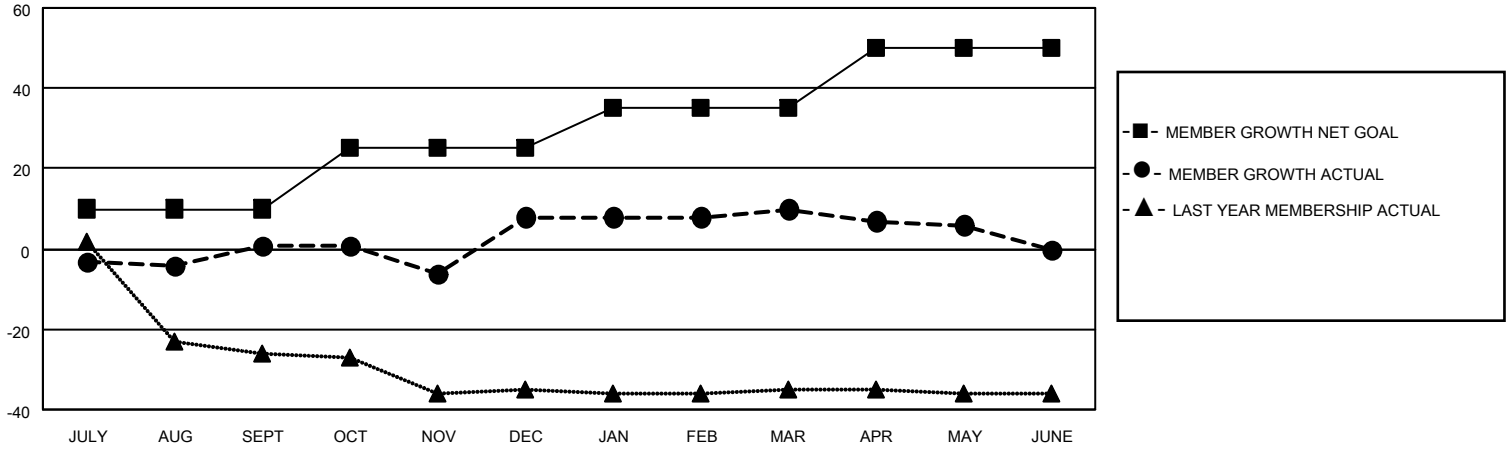
Clubs			
RESULTS FOR 2022-2023			
QUARTER	NEW CLUB GOAL	NEW CLUBS	DROPPED CLUBS
JULY/AUG/SEPT	0	0	0
OCT/NOV/DEC	0	0	0
JAN/FEB/MAR	1	0	0
APR/MAY/JUNE	0	0	0

Members			
RESULTS FOR 2022-2023			
QUARTER	MEMBER GROWTH NET GOAL	MEMBER GROWTH ACTUAL	DROPPED MEMBERS ACTUAL (including transfers)
JULY/AUG/SEPT	10	10	9
OCT/NOV/DEC	15	21	14
JAN/FEB/MAR	10	4	2
APR/MAY/JUNE	15	5	9

**GOALS AND ACTUAL NEW CLUBS CUMULATIVE**



**GOALS AND ACTUAL MEMBERS CUMULATIVE**



DROPPED CLUBS: 0	
<b>DROPPED MEMBERS</b>	
DECEASED	0
CLUB CANCELLED	0
OTHER	34
<b>TOTAL</b>	<b>34</b>

13 CLUBS OF 30 ADDED 1 OR MORE NEW MEMBERS

[CLICK HERE FOR CUMULATIVE MEMBERSHIP DATA](#)

<u>GENDER DISTRIBUTION</u>	
MALE	267 (56.69%)
FEMALE	204 (43.31%)
NON BINARY	0 (0.00%)
PREFER NOT TO ANSWER	0 (0.00%)
<b>TOTAL FAMILY UNIT MEMBERS</b>	
	<b>55</b>
<b>FAMILY MEMBERS PAYING HALF DUES</b>	
	<b>28</b>